

PRODUCT DATA SHEET

BIA BIA C1590-160 BOOSTER • 803064



BRAND

BIANCO
PUMP

PRODUCT DETAILS

The Bianco BIA-C1509-160 is a domestic home booster pump designed for boosting pressure on potable water and domestic hot water. The pump provides additional pressure to showers, taps and similar outlets in systems where there is low pressure or restrictive pipe work.

Installed after the hot water cylinder (and after the tempering valve) the hot water pressure is improved at point of use in gravity fed or low pressure hot water circuits.

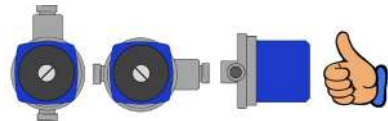
BENEFITS

- Simple to install
- Supplied with 1/2" BSPM unions

FEATURES

- Automatic Operation with in-built flow sensor
- Quality pump materials and construction to ensure reliable operation
- Canned motor
- 1m power lead with Au/NZ 3 pin plug

INSTALLATION NOTE



- The blue motor housing must be installed horizontally, NEVER vertically

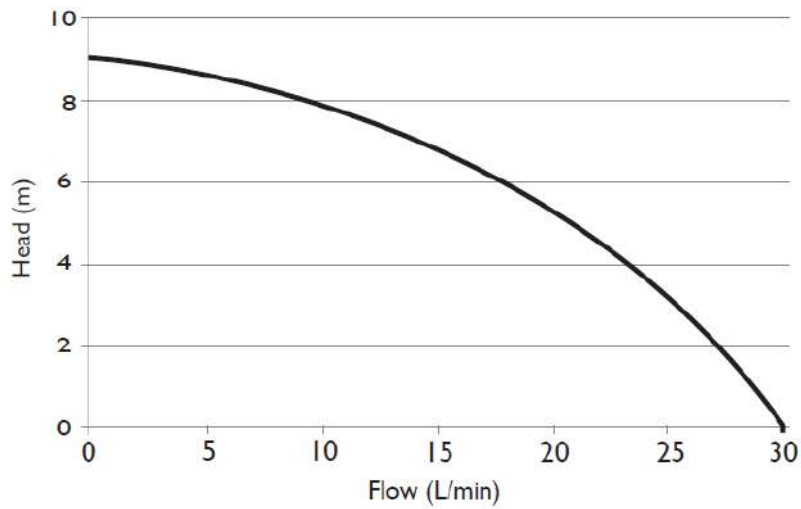
TECHNICAL DATA

RATED POWER (W)	120W
MAX. FLOW [LPM]	30 lpm
MAX. HEAD [M]	9m
WORKING TEMPERATURE	< 60°C
LIQUID TEMPERATURE	3°C - 60°C
MAX DIA. OF PARTICLE	< 1.5mm
MOTOR DUTY	Continuous
MOTOR PROTECTION	H class insulation
CAPACITOR	3 uF +/-5% 450V
AUTOMATIC FUNCTION	Inbuilt flow sensor

RATED VOLTAGE	220V-240V 50 Hz
RATED CURRENT	0.5A @ 230V
POWER CABLE TYPE	1m with Au/NZ 3pin plug
PROTECTION CLASS	IP42
IMPELLERS	Corrosion resistant composite PPO
HYDRAULIC BODY	304 Grade stainless steel
OUTLET	3/4" BSPM
OPTIONAL UNIONS	(Supplied) 1/2" BSPM
NET WEIGHT (KG)	Pump only 2.4kg
PACKAGE DIMENSION	150 x 150 x 200 (mm)

HYDRAULIC PERFORMANCE

BIA-C1509-160



DIMENSIONS

DIMENSIONS

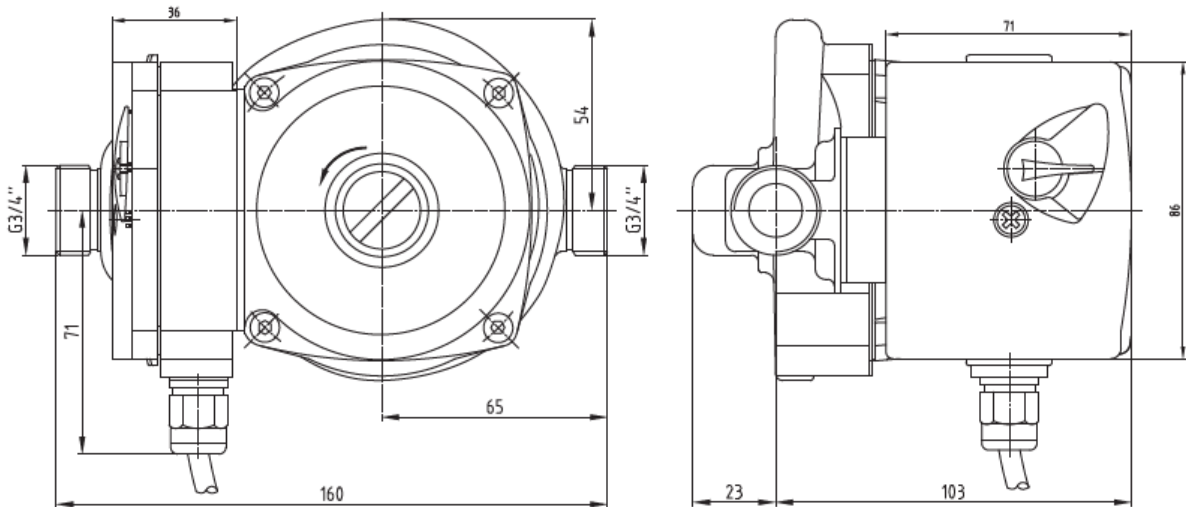
160 long x 136 high x 126 deep

OUTLET PORTS

3/4" BSPM

OUTLET UNIONS

1/2" BSPM



FLANGE TO FLANGE DISTANCE

160 mm

WARRANTY / CERTIFICATIONS

